

參考資料

REV.	ECN NO.	DATE
A	Released	11/08/2005
B	1025/07	10/25/2007
C	0808/12	08/08/2012

Specifications:

Materials:

- * Contact (Metal Housing): Brass (CuNz)
- * Wire guard: Stainless steel
- * Housing (Insulator): Thermoplastic (UL94V-0)
- * Screws: Steel zinc plating
- * Surface of solder tail: tinned
- * Pitch: 5.08mm

Electrical:

- * Current Rating: 15 A/way max.
- * Voltage Rating: 300VAC
- * Withstanding Voltage: AC 1600V(1 min)
- * Wire range: 14~22AWG

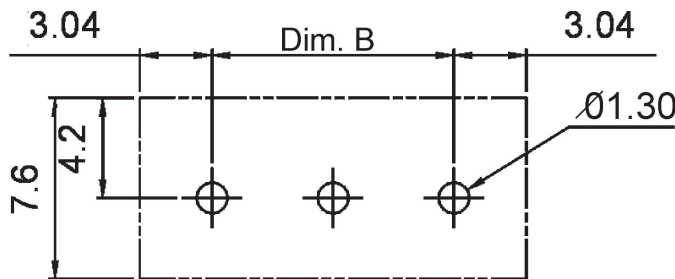
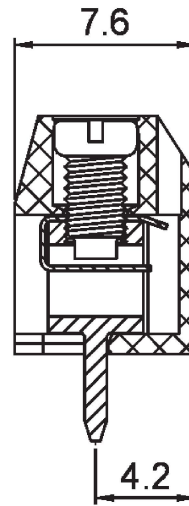
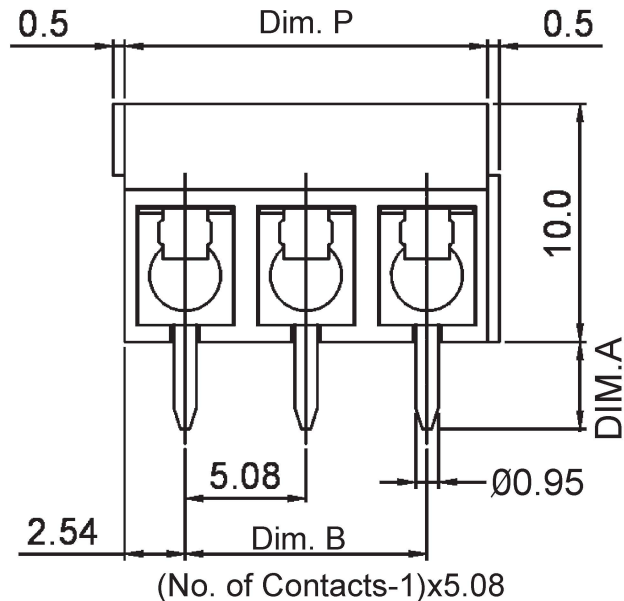
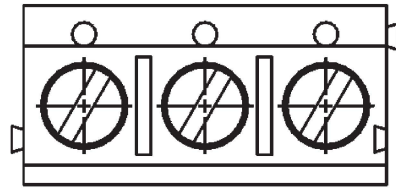
Mechanical:

- * Operating Temperature: -40°C ~ + 115°C
- * Soldering Temperature: +250±10°C, for 5 Sec.
- * Torque: 2.6Lb-In
- * Screw: M2.6
- * Strip length: 5~6mm

How to Order:

TB111 - 2 - x - x - x - x

- No. of Contacts: 2 ~ 24
- Color: U: Blue, B: Black, E: Green
- Dim. A: 0: 4.4mm, 1: 3.8mm, 2: 3.5mm
- Screw type: 1: "+" screw, 0: "-" screw



Recommended PCB Layout

N = Number of poles
 Dim P = N x 5.08
 Dim B = (N - 1) x 5.08

	Dim A	Dim B
2-6p	±0.15	±0.10
7-12p	±0.20	±0.20
13-18p	±0.30	±0.25
19-24p	±0.40	±0.30

RoHS Compliant

Scale		Drawn by		AlphaPlus Connectors & Cables Corp. <small>Tel: 886-2-22006182 Fax: 886-2-22702041 e-mail: alpha-plus@umail.hinet.net http://www.alphaplus.com.tw</small>	
Unit	mm	Checked by			
Tolerance		Sheet	1 of 1	Name: Terminal Blocks, 5.08mm pitch, Front Wire inlet type	
.X ± 0.30		Projection		Part number	TB111-2-x-x-x-x
.XX ± 0.10				Drawing no.	TB111-2-x-x-x-x
.XXX ±					
ANG. = 1°					