

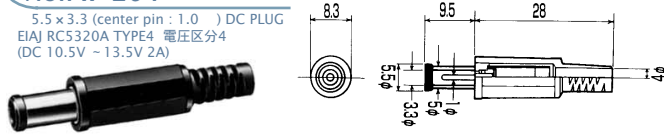


DC PLUGS & JACKS

EIAJ RC5320A TYPE4 电压区分4 適合品 RATING 定格: DC13.5V 2A

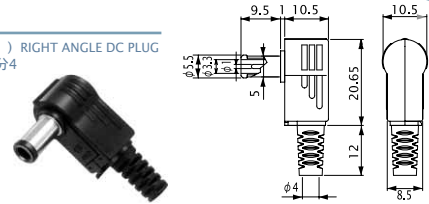
No.MP-204

5.5×3.3 (center pin : 1.0) DC PLUG
EIAJ RC5320A TYPE4 电压区分4
(DC 10.5V ~ 13.5V 2A)



No.MP-204LN

5.5×3.3 (center pin : 1.0) RIGHT ANGLE DC PLUG
EIAJ RC5320A TYPE4 电压区分4
(DC 10.5V ~ 13.5V 2A)



No.MC-5324

DC ADAPTOR CABLE L=1800mm
5.5×3.3 (center pin : 1.0) DC PLUG
EIAJ RC5320A TYPE4 电压区分4
(DC 10.5V ~ 13.5V 2A)



No.MC-5324L

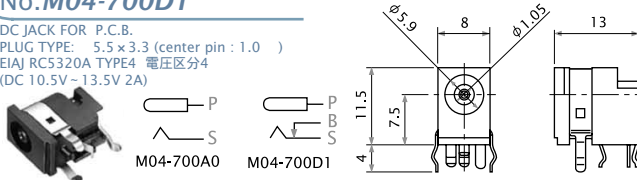
RIGHT ANGLE DC ADAPTOR CABLE L=1800mm
5.5×3.3 (center pin : 1.0) DC PLUG
EIAJ RC5320A TYPE4 电压区分4
(DC 10.5V ~ 13.5V 2A)



No.M04-700A0

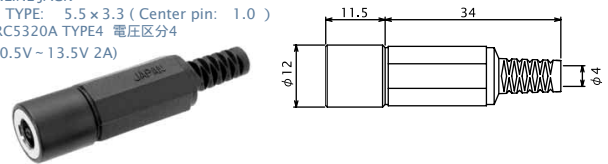
No.M04-700D1

DC JACK FOR P.C.B.
PLUG TYPE: 5.5×3.3 (center pin : 1.0)
EIAJ RC5320A TYPE4 电压区分4
(DC 10.5V ~ 13.5V 2A)



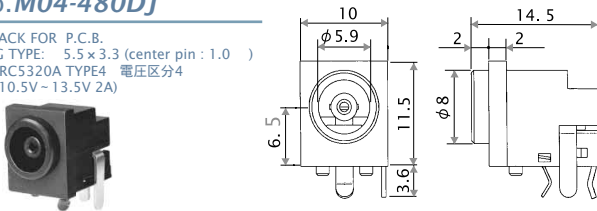
No.MJ-084N

DC INLINE JACK
PLUG TYPE: 5.5×3.3 (Center pin : 1.0)
EIAJ RC5320A TYPE4 电压区分4
(DC 10.5V ~ 13.5V 2A)



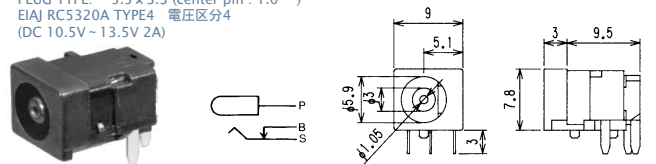
No.M04-480DJ

DC JACK FOR P.C.B.
PLUG TYPE: 5.5×3.3 (center pin : 1.0)
EIAJ RC5320A TYPE4 电压区分4
(DC 10.5V ~ 13.5V 2A)



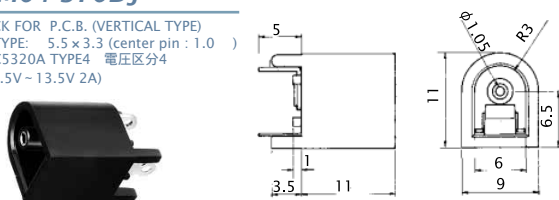
No.M04-390DJ

DC JACK FOR P.C.B.
PLUG TYPE: 5.5×3.3 (center pin : 1.0)
EIAJ RC5320A TYPE4 电压区分4
(DC 10.5V ~ 13.5V 2A)



No.M04-370DJ

DC JACK FOR P.C.B. (VERTICAL TYPE)
PLUG TYPE: 5.5×3.3 (center pin : 1.0)
EIAJ RC5320A TYPE4 电压区分4
(DC 10.5V ~ 13.5V 2A)



No.MJ-19

PANEL MOUNT DC JACK
PLUG TYPE: 5.5×3.3 (center pin : 1.0)
EIAJ RC5320A TYPE4 电压区分4
(DC 10.5V ~ 13.5V 2A)

