



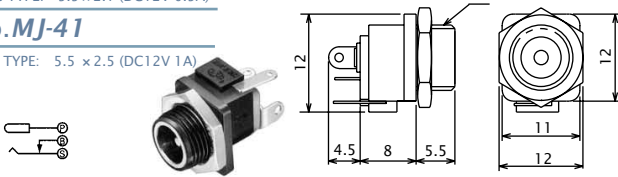
DC PLUGS & JACKS

PLUG TYPE 5.5 × 2.1 & 5.5 × 2.5

No. MJ-40

PLUG TYPE: 5.5 × 2.1 (DC12V 0.5A)

PNANEL MOUNT DC JACK



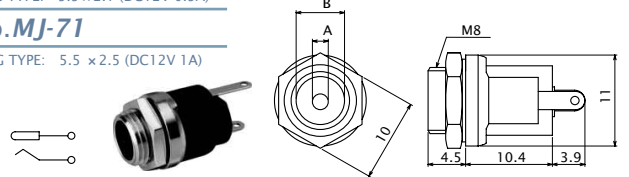
No. MJ-41

PLUG TYPE: 5.5 × 2.5 (DC12V 1A)

No. MJ-70

PLUG TYPE: 5.5 × 2.1 (DC12V 0.5A)

PNANEL MOUNT DC JACK



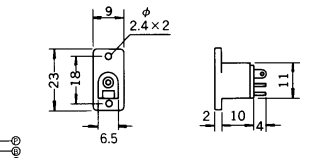
No. MJ-71

PLUG TYPE: 5.5 × 2.5 (DC12V 1A)

No. MJ-181M

PLUG TYPE: 5.5 × 2.1 (DC12V 0.5A)

PNANEL MOUNT DC JACK



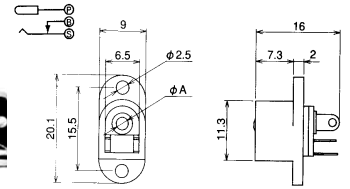
No. MJ-182M

PLUG TYPE: 5.5 × 2.5 (DC12V 1A)

No. MJ-179

PLUG TYPE: 5.5 × 2.1 (DC12V 0.5A)

PNANEL MOUNT DC JACK



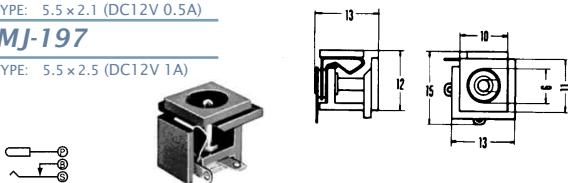
No. MJ-180

PLUG TYPE: 5.5 × 2.5 (DC12V 1A)

No. MJ-196

PLUG TYPE: 5.5 × 2.1 (DC12V 0.5A)

DC JACK INSERT TYPE



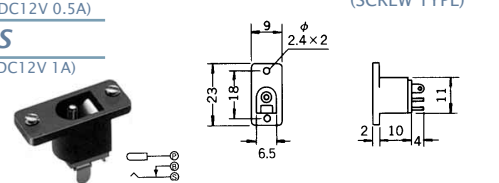
No. MJ-197

PLUG TYPE: 5.5 × 2.5 (DC12V 1A)

No. MJ-181MS

PLUG TYPE: 5.5 × 2.1 (DC12V 0.5A)

PNANEL MOUNT DC JACK (SCREW TYPE)



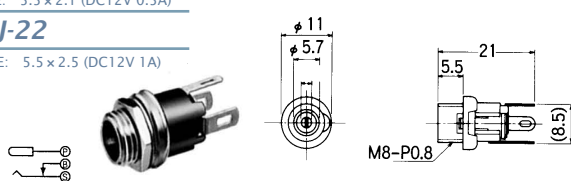
No. MJ-182MS

PLUG TYPE: 5.5 × 2.5 (DC12V 1A)

No. MJ-21

PLUG TYPE: 5.5 × 2.1 (DC12V 0.5A)

PNANEL MOUNT DC JACK



No. MJ-22

PLUG TYPE: 5.5 × 2.5 (DC12V 1A)

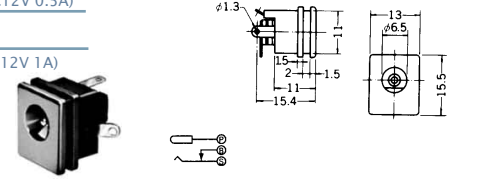
No. MJ-196E

PLUG TYPE: 5.5 × 2.1 (DC12V 0.5A)

DC JACK INSERT TYPE

No. MJ-197E

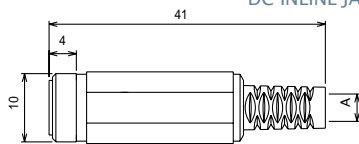
PLUG TYPE: 5.5 × 2.5 (DC12V 1A)



No. MJ-077N

PLUG TYPE: 5.5 × 2.1 (DC12V 0.5A)

DC INLINE JACK



No. MJ-078N

PLUG TYPE: 5.5 × 2.5 (DC12V 1A)

No. MJ-21AM

PLUG TYPE: 5.5 × 2.1 (DC12V 0.5A)

PNANEL MOUNT DC JACK



No. MJ-22AM

PLUG TYPE: 5.5 × 2.5 (DC12V 1A)



No. MC-2376

PLUG TYPE: 5.5 × 2.1 (DC12V 0.5A)

DC EXTENSION CABLE L=1800mm



No. MC-2377

PLUG TYPE: 5.5 × 2.5 (DC12V 1A)

No. MJ-23

PLUG TYPE: 5.5 × 2.1 (DC12V 0.5A)

DC INLINE JACK FOR MOLDING

No. MJ-24

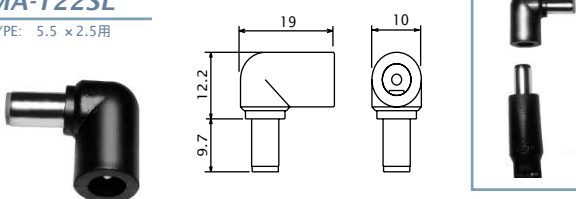
PLUG TYPE: 5.5 × 2.5 (DC12V 1A)



No. MA-121SL

PLUG TYPE: 5.5 × 2.1用

DC PLUG ADAPTOR STRAIGHT PLUG TO RIGHT ANGLE PLUG



No. MA-122SL

PLUG TYPE: 5.5 × 2.5用

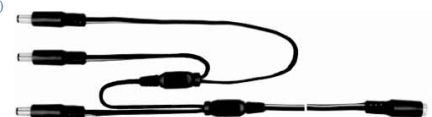
No. MC-1J3P

1 JACK 3 PLUGS (5.5 × 2.1mm) (DC12V 0.5A)

DC CENTIPEDE POWER CABLE

No. MC-1J5P

1 JACK 5 PLUGS (5.5 × 2.1mm) (DC12V 1A)



Other combinations are available upon request.