

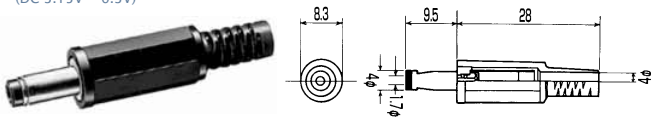
## EIAJ RC5320A TYPE2

電圧区分2 適合品

RATING 定 格: DC6.3V 2A

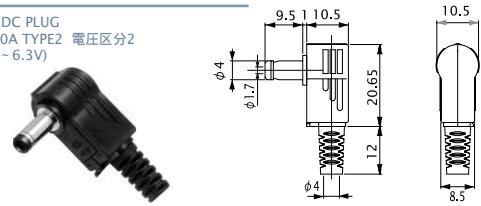
### No.MP-202

4.0×1.7 DC PLUG  
EIAJ RC5320A TYPE2 電圧区分2  
(DC 3.15V ~ 6.3V)



### No.MP-202LN

4.0×1.7 DC PLUG  
EIAJ RC5320A TYPE2 電圧区分2  
(DC 3.15V ~ 6.3V)



### No.MC-5322

DC ADAPTOR CABLE L=1800mm  
4.0×1.7 DC PLUG  
EIAJ RC5320A TYPE2 電圧区分2  
(DC 3.15V ~ 6.3V)



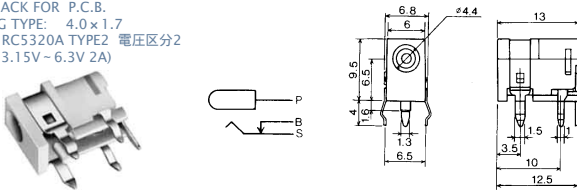
### No.MC-5322L

DC ADAPTOR CABLE L=1800mm  
4.0×1.7 DC PLUG  
EIAJ RC5320A TYPE2 電圧区分2  
(DC 3.15V ~ 6.3V)



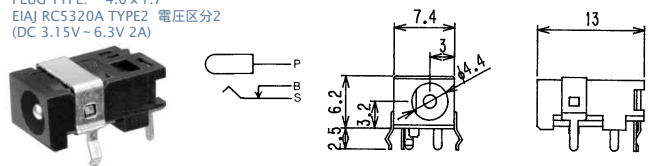
### No.M04-339A0

DC JACK FOR P.C.B.  
PLUG TYPE: 4.0×1.7  
EIAJ RC5320A TYPE2 電圧区分2  
(DC 3.15V ~ 6.3V 2A)



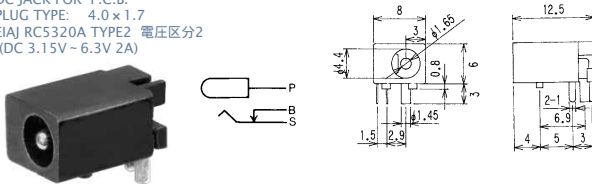
### No.M04-730A0

DC JACK FOR P.C.B.  
PLUG TYPE: 4.0×1.7  
EIAJ RC5320A TYPE2 電圧区分2  
(DC 3.15V ~ 6.3V 2A)



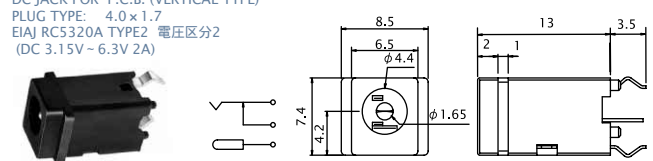
### No.M04-260DJ

DC JACK FOR P.C.B.  
PLUG TYPE: 4.0×1.7  
EIAJ RC5320A TYPE2 電圧区分2  
(DC 3.15V ~ 6.3V 2A)



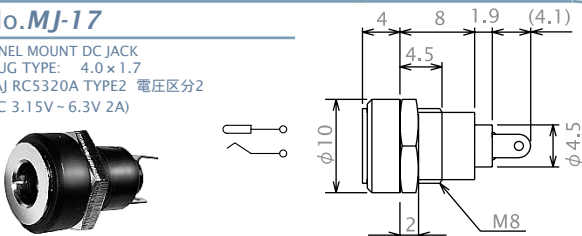
### No.M04-520DJ

DC JACK FOR P.C.B. (VERTICAL TYPE)  
PLUG TYPE: 4.0×1.7  
EIAJ RC5320A TYPE2 電圧区分2  
(DC 3.15V ~ 6.3V 2A)



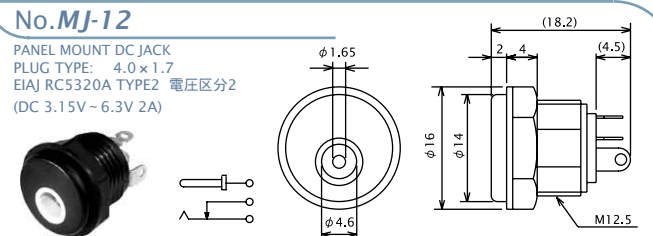
### No.MJ-17

PANEL MOUNT DC JACK  
PLUG TYPE: 4.0×1.7  
EIAJ RC5320A TYPE2 電圧区分2  
(DC 3.15V ~ 6.3V 2A)



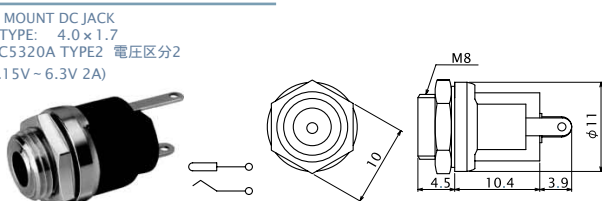
### No.MJ-12

PANEL MOUNT DC JACK  
PLUG TYPE: 4.0×1.7  
EIAJ RC5320A TYPE2 電圧区分2  
(DC 3.15V ~ 6.3V 2A)



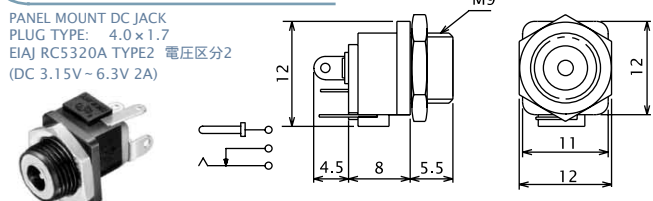
### No.MJ-72

PANEL MOUNT DC JACK  
PLUG TYPE: 4.0×1.7  
EIAJ RC5320A TYPE2 電圧区分2  
(DC 3.15V ~ 6.3V 2A)



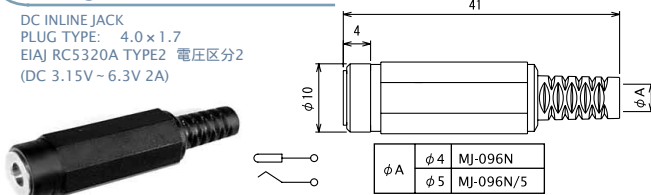
### No.MJ-42

PANEL MOUNT DC JACK  
PLUG TYPE: 4.0×1.7  
EIAJ RC5320A TYPE2 電圧区分2  
(DC 3.15V ~ 6.3V 2A)



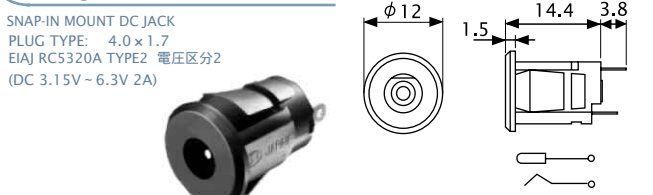
### No.MJ-096N

DC INLINE JACK  
PLUG TYPE: 4.0×1.7  
EIAJ RC5320A TYPE2 電圧区分2  
(DC 3.15V ~ 6.3V 2A)



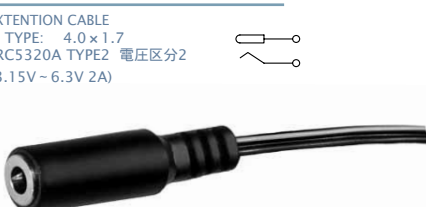
### No.MJ-62

SNAP-IN MOUNT DC JACK  
PLUG TYPE: 4.0×1.7  
EIAJ RC5320A TYPE2 電圧区分2  
(DC 3.15V ~ 6.3V 2A)



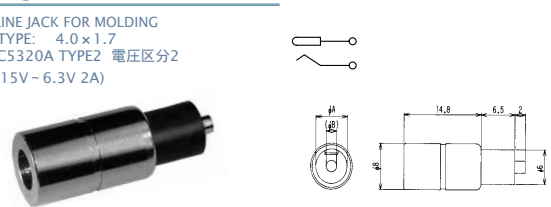
### No.MC-5327

DC EXTENSION CABLE  
PLUG TYPE: 4.0×1.7  
EIAJ RC5320A TYPE2 電圧区分2  
(DC 3.15V ~ 6.3V 2A)



### No.MJ-28

DC INLINE JACK FOR MOLDING  
PLUG TYPE: 4.0×1.7  
EIAJ RC5320A TYPE2 電圧区分2  
(DC 3.15V ~ 6.3V 2A)





# DC PLUGS & JACKS

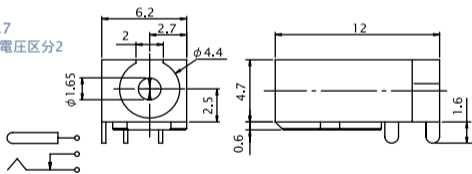
EIAJ RC5320A TYPE2

電圧区分2 適合品

RATING 定 格: DC6.3V 2A

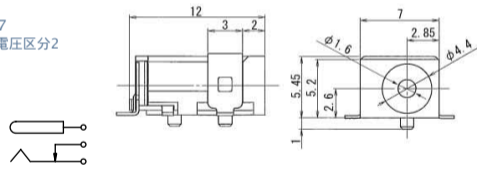
No. *MJ-7301DJ*

DC JACK  
PLUG TYPE: 4.0×1.7  
EIAJ RC5320A TYPE2 電圧区分2  
(DC3.15V ~ 6.3V 2A)



No. *M04-A49A0*

DC JACK  
PLUG TYPE: 4.0×1.7  
EIAJ RC5320A TYPE2 電圧区分2  
(DC3.15V ~ 6.3V 2A)



*Marushin electric mfg. co., ltd*